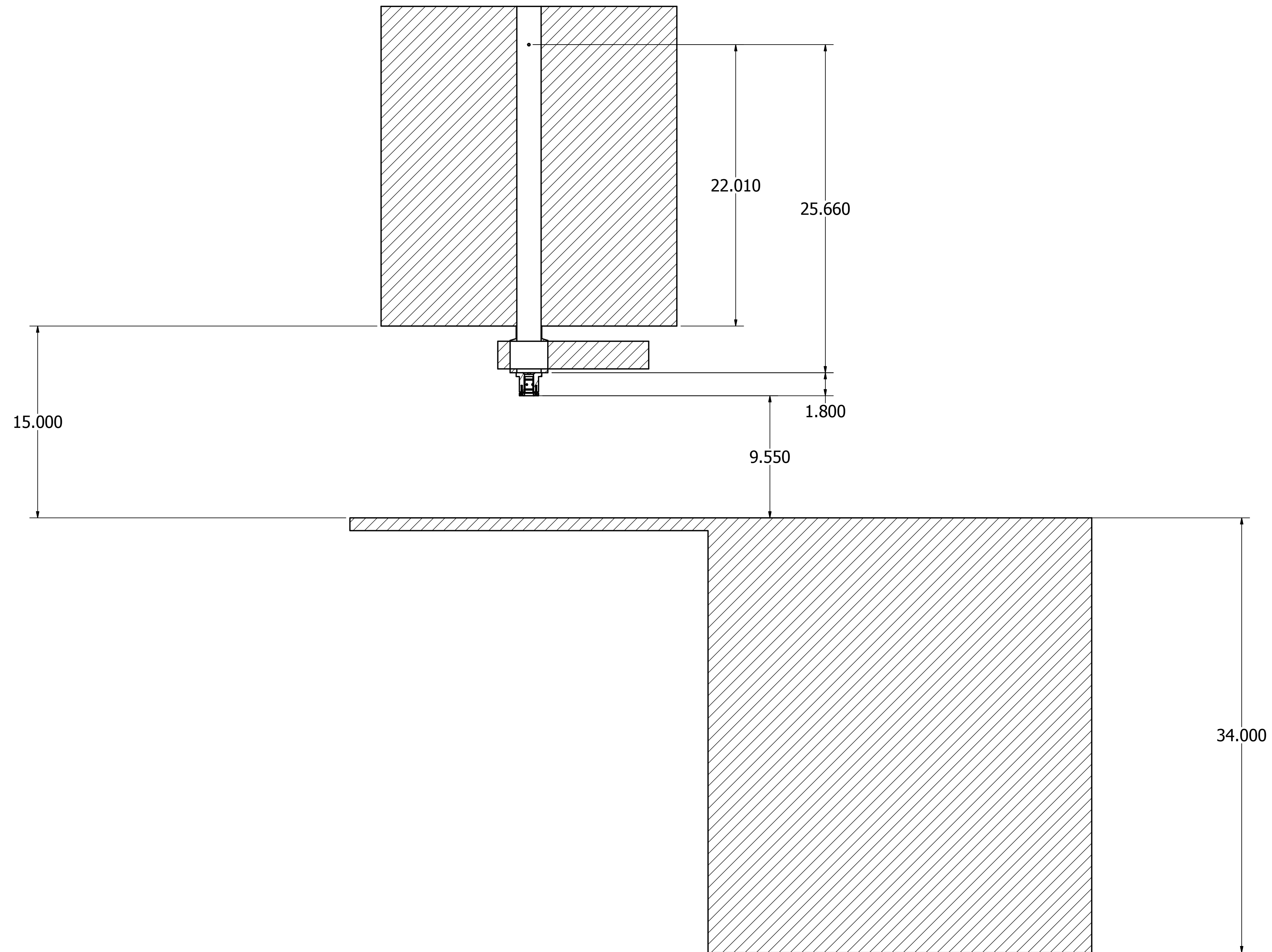
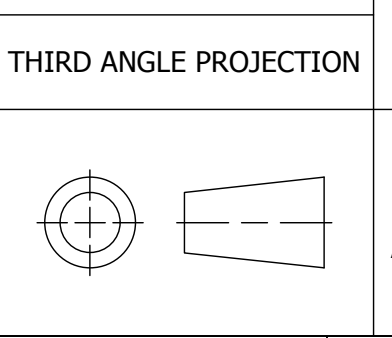


- NOTES:**  
 1. MATERIAL:  
 2. MAXIMUM ROUGHNESS  $\sqrt{32}$  UNLESS SPECIFIED.  
 3. REMOVE ALL BURRS AND SHARP EDGES UNLESS SPECIFIED.



SECTION B-B  
 SCALE 0.2 : 1

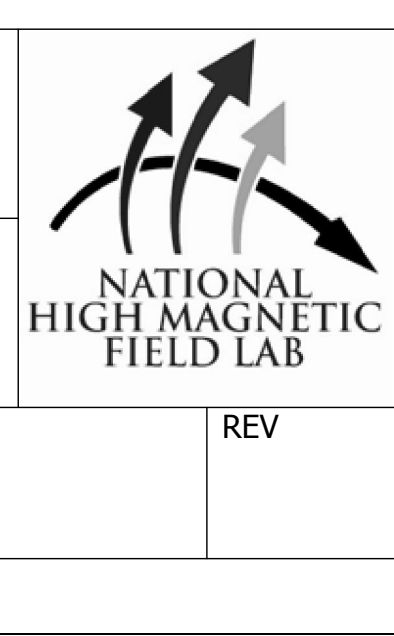
This drawing and the information it contains are both property of the Florida State University and are to be held by the recipient as confidential and are not to be transferred to any third party, used to make or furnish information for making any physical structure or any pictorial, graphic or verbal representation of any information contained herein or copied (unless supplied in productive form) without the express written consent of the Florida State University.



**GENERAL TOLERANCES**  
 1 PL DEC:  $\pm 0.020$   
 2 PL DEC:  $\pm 0.010$   
 3 PL DEC:  $\pm 0.005$   
 ANGLES:  $\pm 1'$   
 UNLESS OTHERWISE SPECIFIED, DIMENSIONS ARE IN INCHES. DO NOT SCALE DRAWING

PART MODEL FILENAME Assembly2.iam	
MODELED semenov	7/12/2012
DETAILED semenov	7/12/2012
CHECKED	

NATIONAL HIGH MAGNETIC FIELD LABORATORY 1800 E PAUL DIRAC DRIVE TALLAHASSEE, FLORIDA 32310	
DESC	
SIZE <b>D</b>	DWG NUMBER <b>Assembly2</b>
SHT 1 of 1	



PRODUCED BY AN AUTODESK EDUCATIONAL PRODUCT

PRODUCED BY AN AUTODESK EDUCATIONAL PRODUCT